

Your county
extension office



**UW
Extension**
Cooperative Extension
Shawano County

Shawano County Agricultural Newsletter

UW-Extension

February 2012



UW-Extension Turns 100!

Hi All—I hope the year is off to a great start for your farm, family, or business. 2012 marks a special anniversary for Cooperative Extension as it was 100 years ago that we began serving the people of Wisconsin.

In 1912, E.L. Luther was hired to provide agricultural information about livestock, winter feed, soils and legumes in Oneida County. He made farm visits on his two-cylinder bike, providing the latest agricultural information direct from the University of Wisconsin-Madison. His work was an early example of the Wisconsin Idea – extending the boundaries of the university to the boundaries of the state.



Many things have changed in the past 100 years. Today, Cooperative Extension is home to four program areas offering local information in person and online, providing research-based information 24/7. There are offices in each of Wisconsin's 72 counties and on three Native American reservations, through which Cooperative Extension develops practical educational programs tailored to local needs and based on university knowledge and research.

This special anniversary provides a time to reflect on the achievements of the past 100 years. We have been honored to work with your farms and business to help improve production and profitability and look forward to serving you in the years to come.

Katie Behnke

Inside this issue:

Forage Council	2
Improving Reproductive Efficiency	3
Pesticide Applicator Training	4
Fertilizer Decision Making	4
Transferring the Farm	5
Status of WI Agriculture	6-7
Cattle Feeder Clinic	8
Raising Quality Dairy Heifers	9
Dairy & Beef Husbandry Conference	10
Grain Crops Production Clinic	11

There are tons of great events coming up...look inside for more details!

General Farming

- Heart of the Farm Workshop for Farm Women—March 7, Kelly Lake
- Transferring the Farm Seminar—March 23, Shawano

Dairy

- Improving Dairy Reproductive Efficiency—February 21, Shawano
- Raising Quality Dairy Heifers—February 28, Kimberly

Livestock

- Cattle Feeder Clinic—February 14, Kelly Lake
- Midwest Dairy and Beef Husbandry Conference—March 1, Madison

Crops

- Forage Council Meeting—February 16, Gresham
- Private Pesticide Applicator Training—March 1, Shawano
- Fertilizer Decision Making Workshop—February 9/10, Coleman, Oconto Falls
- Grain Crops Production Clinic—February 17, Green Bay

WI Farm Fun Facts

- In 2010, Wisconsin produced 883,400 milk pelts, valued at \$72.4 million
- Wisconsin ranks #5 in production of cucumbers for pickles
- Shawano County is home to 367 dairy farms



Shawano County Forage Council

A Midwest Forage Association Affiliate

Shawano County UW-Extension

311 North Main Street

Shawano, WI 54166

715.526.6136

2012 Annual Meeting & Educational Program

Thursday, February 16, 2012

The Woodland, Gresham

- 10:15 Registration
- 10:30 **Improving and Evaluating Starch Digestibility for Lactating Dairy Cows**
Pat Hoffman, UW-Extension, Marshfield Ag Research Station
- 11:15 **Local Rental Rates and Rental Agreements**
A look at local land rental prices, expectations for the future, and how to build the rental agreement that is best for your farm.
Katie Behnke, Shawano County Agriculture Agent
- 11:45 Shawano County Forage Council Business Meeting
- 12:00 Lunch
- 1:00 **Wisconsin Alfalfa Yield and Persistence Project**
A look at alfalfa yield and quality over the life of the stand and what it means for crop management on the farm.
Mike Rankin, UW-Extension Crops and Soils Agent, Fond du Lac County
- 1:45 Update on Midwest Forage Association
- 2:00 Seed Auction
- 2:30 Adjourn
-

2012 Shawano County Forage Council Annual Meeting

Advance Registration Required by February 10

Make checks payable to: Shawano County Forage Council

Return to: Shawano County UWEX, 311 North Main Street, Shawano, WI 54166

Registration & Membership Options:

- ☐ Midwest Forage Association & Shawano County Forage Council Membership + Lunch @ \$65
- ☐ Shawano County Forage Council Membership + Lunch @ \$35
- ☐ Lunch only @ \$15

Name(s) _____

Address _____

Zip _____ Phone _____

Email _____



Improving Reproductive Efficiency



February 21st, 2012
10:00 a.m.—3:00 p.m.
Amicos—Shawano

The Economic Value of Improving Reproductive Efficiency: In this session Dr. Victor Cabrera will tell you how much more money you could make by improving your herd's reproductive efficiency.

Update on Reproductive Research at UW Madison: Poor reproductive efficiency is a significant source of economic loss affecting many dairies. Come and learn what researchers are doing to solve this problem by Dr. Paul Fricke.

Mastitis is not only about milk: Did you know that mastitis can impact the reproductive performance of your herd? During this session you will learn from Dr. Pamela Ruegg how these two events relate.

What is Repro Money and how it can help you increase your economic returns: This new program is offered to all Wisconsin dairy farmers, and it's free! You will be able to identify which are the areas in your reproductive plan that are slowing down your gains and help you address each issue through an organized plan. This is your chance to enroll!

Session Highlights

Did you know that when you improve your herd's reproductive performance you will:

- ✓ Get more milk
- ✓ Have more pregnant cows
- ✓ Have more calves born
- ✓ Increase your genetic progress
- ✓ Modify your annual herd turnover
- ✓ Increase your overall herd profitability

Sponsored by: Accelerated Genetics®



Name

Mailing Address

City

State

Zip

Telephone

Email

REGISTRATION FEE : \$10 /participant (include lunch and program materials)

MAKE CHECK PAYABLE TO: Shawano County UW-Extension

SEND CHECK TO: Shawano County UW-Extension Office,
311 N Main St. #101, Shawano WI 54166

Reminder—Pesticide Applicator Training Offered

Crop producers who need to re-certify or become certified for private pesticide application can register for one of two sessions to be held this winter. The next Private Pesticide Applicator Training and Certification sessions is scheduled for:

Thursday, March 1st (register by Feb 23)



Training will take place at the Shawano County Courthouse in downstairs meeting rooms A and B. Registration will begin at 9:45 am, and the program will run from 10:00 am until 3:30. Lunch is on your own, but there will be an hour break at noon. You must pre-register at the UWEX Office by the appropriate date, pay your \$30 training and materials fee, and READ your training manual prior to coming to the training session. The UWEX Office is located in Room 101 of the Courthouse in Shawano, and we are open from 8 am to 4:30 pm Monday through Friday.

Contact us at 715-526-6136 or by email at katie.behnke@ces.uwex.edu.

Fertilizer Decision-Making for 2012—Coleman and Oconto Falls

Profitable crop production requires proper nutrient management. Current high crop prices and record high input costs may lead to more questions or different answers than in a normal cropping year. UW-Extension of Marinette and Oconto Counties is offering a pair of workshops to assist producer decision-making in these critical areas.

The sessions will give producers the opportunity to analyze their nutrient source options from the standpoint of crop profitability. Workshop content will help producers better understand the interactions between soil reserves, on-farm nutrient sources, and fertilizers to make sure their crops are not yield-limited due to shortages of any given nutrient.

The sessions will be held on Thursday, February 9 in the Pound Town Hall and on Friday, February 10 in the Oconto Falls Community Library. Both events will begin at 10:15 a.m. and continue with the approximate following schedule, in case producers are primarily interested in certain crops. The beginning topic will be fertilizer cost

analysis and fertilizer treatment technologies. Then, participants will work through nutrient needs and economics for various crops, starting with corn at about 11 a.m., a break for lunch, then soybeans at 12:30 p.m., alfalfa at 1 p.m., and small grains and other crops at 1:30 p.m.

Discussion will be led by Scott Reuss, Crops/Soils Agent. The goal of the day is to assist producers to maximize per acre profitability by matching the optimum nutrient application rate to an individual farm's history, soil types, and the current pricing structure. Attending producers are encouraged to bring along copies of any available on-farm data to include soil test data, manure analysis, cropping plans, and any other pertinent information.

There will be a \$5 charge for this program. Pre-registration is requested, but not required. To register, or if you have any questions about these events, contact Scott Reuss, UW-Extension Crops/Soils Agent at 715-732-7510, toll-free at 1-877-884-4408, or by e-mailing scott.reuss@ces.uwex.edu

Transferring the Farm in a High Stakes Era

A Practical Seminar for Beginning and Retiring Farmers



March 23, 2012
The Gathering
2600 E. Richmond Street
Shawano



- 9:15 Registration
- 9:30 **Welcome and Overview of Resources for Beginning Farmers**
- 9:40 **Selecting Farm Business Arrangements that Work for You**
Phil Harris, Farm Law Specialist, UW-Madison
- 10:45 **Importance of Communications in Farm Successions**
Joy Kirkpatrick, Outreach Specialist, Center for Dairy Profitability
- Noon Lunch
- 12:45 **Tax Considerations for Farm Transfers**
Phil Harris, Farm Law Specialist, UW-Madison
- 2:00 Breakout Sessions: *(Select one)*
- **Retirement Planning**
Todd Raether, Financial Services Professional, Trusted Retirement Resources
 - **Building Equity**
- 2:45 **Discussion of the Next Steps**
- 3:00 Adjourn

University of Wisconsin, U. S. Department of Agriculture and Wisconsin counties cooperating. UW-Extension provides equal opportunities in employment and programming including Title IX and ADA.

Transferring the Family Farm

Registration Due: March 19, 2012

Cost: \$20.00 per person

Checks Payable to: Shawano County UW-Extension

Return to: Katie Behnke,
311 N Main Street, #101,
Shawano, WI 54166

Name(s) _____

Phone _____

Email _____

Address _____

City _____

Number attending x \$ _____ = \$ _____.

Status of Wisconsin Agriculture 2012—Summary

Report by the Department of Agricultural and Applied Economics, UW-Madison and UW-Extension

Wisconsin farmers as a whole earned a record high net farm income of \$2.4 billion in 2011. This was up about \$350 million from 2010 and three times the very depressed level of \$800 million in 2009. The new record in net farm income reflects record high prices for milk, cattle, hogs, corn and soybeans. For most farmers, these record prices generated enough additional revenue to offset much higher costs for some farming inputs.

Wisconsin's record net farm income was not shared equally among commodity sectors. Grain producers fared best. Wisconsin corn prices in 2011 averaged nearly 60 percent higher than 2010 and soybean prices were up about 20 percent. But record high prices for these critical livestock feed components trimmed the profits of livestock producers despite record gross receipts. For dairy farmers who purchased all of their feed in 2011, milk income over feed costs was about the same as 2010 even though milk prices were about \$4 per hundredweight higher. Overall, Wisconsin farmers spent about \$1 billion more in 2011 than in 2010 for the goods and services (including rents) they needed to operate their businesses. The largest percentage cost increases were for feed (+23 percent), fertilizer (+30 percent), seeds (+27 percent) and rent (+15 percent). In the aggregate, Wisconsin farmers' balance sheet was stronger at the end of 2010 than at the beginning, and it will improve again in 2011. Between 2009 and 2010, total assets rose \$1.9 billion and total debt climbed by \$700 million, mostly in expanded real estate debt. This put farm equity at the end of 2010 at \$66.7 billion and the debt-to-asset ratio at 0.11, indicating a strong financial position. Dairy farmers have made up most of the ground that they lost in 2009, when severely depressed milk prices led to a major reduction in equity. Their net worth fell by \$1.6 billion between 2008 and 2009 through a combination of devalued assets (primarily cows and financial assets) and increased debt. However, recovery was fairly rapid. By the end of 2010, dairy farmers regained all but \$270 million of the equity they lost in 2009.

2011 in Review

General Economy. Budget woes remained in the headlines in 2011 despite some recovery from the great recession of 2008-09. After a 3 percent GDP growth in 2010, the U.S. economy struggled to reach even half that rate in 2011. Economic growth is being held back by persistently high unemployment, a housing market in shambles and a U.S. congress in gridlock. Anemic economic growth, combined with high food prices, have kept consumers' food expenditures in check. A weak dollar most of the year helped push up U.S. agricultural exports. But financial problems in the European Union have recently caused the dollar to strengthen, making U.S. agricultural products more expensive for overseas customers.

Farm Input Costs. Fertilizer and seed prices were up sharply in 2011. But while fertilizer cost more than it did in 2010, it still was much cheaper than it was four years ago, when high grain and soybean prices induced a planting boom and a fertilizer shortage. In contrast, seed prices have climbed steadily, reflecting stronger demand and an improved product. Fuel prices were up, mainly due to supply uncertainties. Farmland rents have risen along with profits from crop production, and it has become increasingly common for landlords and renters to negotiate agreements that allow both parties to share above-target returns. Credit was cheap and readily accessible to qualified borrowers.

Dairy. U.S. milk cow numbers were up modestly in 2011 and high feed costs restrained milk per cow gain to less than 1 percent. U.S. milk production rose 1.7 percent to 196 billion pounds. Wisconsin production was just over 26 billion pounds, roughly the same as in 2010. While cow numbers were marginally higher, yield per cow was stagnant, partly the result of brutal mid-summer heat and humidity (July milk per cow was down 4 percent from year-earlier). The faltering U.S. economy along with higher retail prices constrained growth in domestic consumption. But dairy exports picked up the slack, reaching record-high levels in 2011 and increasing the U.S. dairy trade balance to almost a 2-to-1 ratio of exports to imports.

Livestock and Poultry. A very small increase in total meat supplies coupled with strong exports of beef and pork tightened domestic meat supplies in 2011. The result was record high prices for most livestock species. High retail prices served to ration the red meat supply. Wholesale turkey prices were up about 10 percent, but broiler prices were below 2010 levels.

Corn and Soybeans. U.S. grain and oilseed producers had a great year. USDA estimates the national average farm-level corn price for the 2010/11 season to be about \$5.20 per bushel, compared to \$3.55 in the previous season. Season-average soybean prices are estimated at \$11.30 per bushel, up from \$9.59 in 2009/10. Nearly 40 percent of total corn usage—more than 5 billion bushels—went to ethanol plants in the 2010/11 marketing year. Corn used for feed and exported fell below last year's levels.

2012 Preview

General Economy. While the outlook for the U.S. economy in 2012 is murky, agriculture is somewhat insulated from the forces battering the general economy. Agriculture fared better than the rest of the economy in 2011 and will likely do so again in 2012. However, the looming euro crisis could change that positive outlook. In particular, if there is a continued flight from the Euro to the U.S. dollar as a safe haven for foreign funds, the resulting strengthening of the dollar would seriously erode agricultural trade prospects.

Farm Input Costs. Most farm input prices are expected to rise by only a small amount in 2012. Fertilizer prices have stabilized somewhat as supply has come closer to meeting expanded demand. But the

direction of fuel prices is highly uncertain due to unstable international political conditions. Land rents will rise along with rising land values. Credit will remain plentiful and cheap by historical standards.

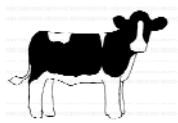
Dairy. Wisconsin milk prices in 2012 could fall \$1.50 to \$2.00 per hundredweight from their lofty level of 2011, but they probably won't drop that far. Much depends on weather here and abroad, especially in New Zealand, our principal dairy export competitor. With higher grain prices almost certain, margins will be much tighter than in 2011, especially for dairy farmers who purchase all or most of their feedstuffs. Domestic sales of dairy products will be influenced by U.S. economic conditions, but smaller increases in retail prices should bring gains at least as large as last year. Exports are more uncertain, but are unlikely to exceed the records set in 2011.

Livestock and Poultry. Due in large part to the severe drought in the Southwest, total meat supplies are expected to fall by about 2 percent in 2012. Heavy drought-related culling of cows has cut cattle inventory, and beef export opportunities will be reduced by stronger competition from Australia and Canada. Pork production could climb a bit, but not nearly enough to offset the drop in beef supplies. Broiler output will be down and turkey meat production up slightly. Because of the overall decrease in the U.S. meat supply, prices for all species will likely be higher.

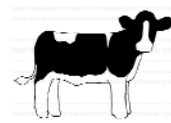
Corn and Soybeans. Grain growers can expect another great year. USDA is currently forecasting 2011/12 corn prices in the mid- \$6 per bushel range, more than \$1 per bushel higher than 2010/11. Soybean price increases will be more modest, probably less than 50 cents per bushel. The elevated corn price forecast comes from a disappointing 2011 harvest relative to early expectations. Cold, wet conditions delayed planting, cutting corn yields by 6 bushels per acre from 2010/11 and 18 bushels from 2009/10. Despite price rationing, which is expected to drop exports by 18 percent and feed use by 4 percent, the ratio of ending stocks to corn use will likely be record low. But growers need to be aware that a bin-busting 2012 corn harvest could burst the corn price bubble.



UW-EXTENSION CATTLE FEEDER CLINIC



Tuesday, February 14, 2012
5:30 pm– Registration Begins 6:00 pm– Meal
6:30 pm to 9 pm– Program
Cost: \$15/person (includes meal and materials)



Location

Holiday Inn on Kelly Lake
9600 County Road G
Suring, WI 54174

P R O G R A M T O P I C S:

UW-Extension Dairy Beef Feeders Survey Project

Presenter: Abby Huibregtse, Oconto County UW-Extension
Details on the Dairy Beef Feeders Survey Project to determine what are Wisconsin feeder's overhead costs and a call for project participants.

Every Feeder Needs To Learn About Grid Marketing...

Presenter: Dr. Amy Radunz, UW-Extension Beef Cattle Specialist
... because all cattle are marketed on a grid. This presentation will cover how cattle are priced on grid and how these grids influence price of cattle in other markets such as an auction facility.

Beef Enterprise Budget Tools: How Much Risk Can You Afford?

Presenter: Dr. Radunz & Dr. Fluharty
This hands-on activity will help participants learn about UW Extension Budgeting Tools by using them to compare different scenarios.

Considerations for Alternative Feeding Operations

Presenter: Dr. Francis Fluharty, Ohio State University
This presentation will cover current market conditions and how they impact commodity and alternative feed prices (all-natural, grass-fed, age and source verified, etc.). Dr. Fluharty will also share tips for successful management of cattle on these alternative programs.

Coordinated by Oconto
& Marinette County
UW-Extension and the
UW-Extension Livestock
Team

UW
Extension

This workshop is partially
sponsored by a grant from
the USDA Risk
Management Agency.

RMA

If you have any questions, please contact :

Abby Huibregtse, Oconto County UW-Extension Agriculture Agent
920-834-6845 or abby.huibregtse@ces.uwex.edu

UW-Extension Steer Feeder Meeting– Tuesday, February 14, 2012

Please return this slip and \$15/person by February 6th to:
Abby Huibregtse UW-Extension 301 Washington Street Oconto, WI 54153

Name(s): _____

Address: _____

Phone Number: _____

E-mail (if applicable): _____

Please make checks payable to UW-Extension. Thank you!

Raising Quality Dairy Heifers

Heifer Management Seminar for Dairy Producers and Heifer Growers

Tuesday, February 28, 2012

Liberty Hall, 800 Eisenhower Drive, Kimberly, WI

9:30 a.m.	Registration (milk, coffee and rolls available)
10:00 a.m.	Genomics: Experience & Possibilities for Heifer Growers <i>Pat Hoffman</i> UW-Extension and UW-Department of Dairy Science Dairy Replacement Management Specialist
10:45 a.m.	The Influence of Inflation, Markets & Current Prices on Heifer Rearing Costs <i>Abby Huibregtse, Agriculture Agent</i> UW-Extension Oconto County
11:15 a.m.	HACCP for Proper Drug Use - Proactive Approach to Drug Residue Prevention <i>Jeff Bleck, DVM</i> Dairy Doctors Veterinary Service, Plymouth, WI
12 Noon	Lunch
1:00 p.m.	"Controlling Feed Costs" - A UW-Research Roundtable <ul style="list-style-type: none"> • Limit Feed Calf Starter Without Sacrificing Quality <i>David Combs, Dairy Nutrition Specialist</i> UW-Department of Dairy Science • UW-Marshfield Dairy Replacement Research Focusing on Feed <i>Pat Hoffman & Samantha Nellis</i> UW-Extension Department of Dairy Science • New Possibilities for Creating Non-Straw/Non-Sortable Diets for Dairy Heifers <i>Wayne Coblenz, Research Agronomist & Dairy Scientist</i> Institute for Environmentally Integration Dairy Management
3:00 p.m.	Adjourn



An EEO/Affirmative Action employer, University of Wisconsin-Extension provides equal opportunities in employment and programming, including Title IX and ADA requirements. Please make requests for reasonable accommodations to ensure equal access to educational programs as early as possible preceding the scheduled program, service or activity. Call 920-459-5900 to request an accommodation. Requests will be kept confidential.

Raising Quality Dairy Heifers - Registration February 28, 2012

Name: _____ Phone: _____

Address: _____ E-mail: _____

Registration fee: \$30.00 per person (Includes materials, meal and speaker fees)

Make check payable to: UW-Extension

Registration deadline: February 21, 2012

Mail to: UW-Extension Sheboygan County
Ann Herzog
5 University Drive
Sheboygan, WI 53081
Or call: 920-459-5902

Please check one:

- ☐ Custom heifer grower
☐ Dairy producer
☐ Dairy Worker/employee
☐ Agri-business professional
☐ Educator
☐ Other

Midwest Dairy and Beef Husbandry Conference

The care and well being of cattle in the state of Wisconsin is important to consumers and farmers alike. This conference will help producers improve the care of their cattle and gain a better understanding on the consumers' perception.

Program Agenda

8:30AM Registration

9:00AM Welcome and Introduction

9:30AM Housing to Optimize Cow Well-being

Nigel Cook, DVM, Associate Professor, University of Wisconsin School of Veterinary Medicine
Dr. Cook will discuss strategies to reduce lameness, increase cow comfort and will also present an overview of the Dairy Initiative at the UW School of Vet Medicine.

10:30AM Pain Management for Livestock

Hans Coetzee, Iowa State University
Dr. Coetzee will discuss pain management in cattle along with management practices that can be used to reduce pain in cattle.

11:30AM Live Dairy Cattle Handling

Demonstration, (Barn #1)
Ben Bartlett, Emeritus Extension Educator, Michigan State
Dr. Bartlett will share the why and how of low stress handling with lecture, live animal demonstrations and attitude adjustments.

11:30AM Lunch for Beef Group

What's your Perception?
Maria Bendixen, UW-Extension

12:30PM Live Beef Cattle Handling

Demonstration, (Barn #1)
Ben Bartlett, Michigan State

12:30PM Lunch for Dairy Group

What's Your Perception?

Break-out Sessions

1:30-2:00PM Choose one - 30 minutes each

A. Dehorning Methods & Pain Management

Sandy Stutigen, DVM, UW-Extension
Edie Brandt, DVM, De Pere Vet Service

B. Caring for Compromised Cattle

Amy Radunz, University of Wisconsin-Extension Beef Specialist

2:05-2:35PM Choose one - 30 minutes each

A. Castration Methods & Pain Management

Hans Coetzee, Iowa State University

B. Dairy Beef Residues

Dave Rhoda, DVM, Wisconsin Veterinary Medical Association

2:40PM Producer Panel

Moderator: Jim Massey, Editor, The Country Today
Panel: Laurie Kyle, Elkhorn, WI
Tina Hinceley, Cambridge, WI
Alan Arndt, Janesville, WI

Topic: Telling agriculture's story!
Understanding the public's perception and what we can do to boost consumer confidence.

3:30PM Adjourn

For more information contact
Mark Mayer, Green County Dairy & Livestock
Agent at: mark.mayer@ces.uwex.edu
or 608-328-9440.



Registration Form Midwest Dairy & Beef Husbandry Conference

Name _____

Address _____

City/State/Zip _____

Email address _____

Phone _____

attending _____

Check which demonstration you would attend:

☐ Dairy Cattle Handling

☐ Beef Cattle Handling

Cost of this workshop is \$50 per person. Pre-registration is required. Registrations received after deadline will be \$55. Registration discount available for groups of 20 or more.

Six veterinary CEU credits will be available for a registration fee of \$75.

I would like CEU Credits: ☐ Yes ☐ No

Make check payable to: UW-Extension

Registration deadline: February 20, 2012

Mail to: Outagamie County UW-Extension
3365 W. Brewster St.
Appleton, WI 54914

Registration also available online at:
<http://fyi.uwex.edu/animalhusbandryconference/>



Grain Crops Production Clinic

Friday, February 17, 2012

Registration: 9:30 am; Program 10:00 am – 3:00 pm

Cobblestone Creek
Brillion

OR

Rock Garden Supper Club
Green Bay

Note: Presentation times will vary with location

Topic:

“How do Fungicides and Inoculants Impact Soybean Production and Profitability?”

“Glyphosate Resistance Issues for Wisconsin Producers”

“The Seven Realities of Corn Production for Wisconsin Producers”

“Current Commodity Supplies and Market Conditions”

“No-Till and Strip-Till in Heavier Soils”

“Cover Crops and Tillage Radish Experiences and Plans”

Presenter:

Shawn Conley
UW-Extension and Soybean Specialist

Vince Davis
UW-Extension Weed Agronomy Specialist

Joe Lauer
UW-Extension Corn Agronomy Specialist

James Cronin
Advance Trading Grain Marketing Specialist/Broker

Producer Panel

Dan Stokes, *Winnebago County crop producer*

Dave Allen, *Winnebago County crop producer*

Nick Schneider, *UW-Extension Agriculture Agent, Winnebago County*

John Simon, *producer and Partners in Production (PIP) LLC rep.*

Anton Kaltenberg, *Partners in Production (PIP) LLC rep Green Bay*

Brent Peterson, *Brown County Land & Water*

Brillion

Bruce Riesterer, *Manitowoc County Soil and Water*

Doug Kapral, *Kapral Agronomy*

Sponsored by:



Grain Crops Production Clinic Registration Form - Please register by Friday, February 10.

Name: _____ Phone: _____

Address: _____ City: _____ Zip: _____

Where do you plan to attend?

_____ Cobblestone Creek, Brillion

_____ Rock Garden, Green Bay

_____ person(s) x \$25/person = \$ _____

Make check payable to: UW-Extension

Return registration to:

For Brillion:

Grain Crops Clinic
Calumet Co. UW-Extension
208 Court St.
Chilton, WI 53014
920-849-1450 x5

For Green Bay:

Grain Crops Clinic
Brown Co. UW-Extension
1150 Bellevue St.
Green Bay, WI 54302
920-391-4610

UW-Extension

311 N Main Street #101
Shawano, WI 54166

Phone: 715-526-6136
Fax: 715-526-4875

<http://shawano.uwex.edu>

*Your county
extension office*



**UW
Extension**
Cooperative Extension
Shawano County

ATTENTION ALL:

If you are no longer involved in agriculture or would no longer like to receive this newsletter, please call (715) 526-6136 and asked to be removed from the list...thank you!

Calendar of Events

February

- 9/10 Fertilizer Decision Making Workshop—Coleman, Oconto Falls
- 14 Cattle Feeder Clinic—Kelly Lake
- 16 Forage Council Meeting—Gresham
- 17 Grain Crops Production Clinic—Green Bay
- 21 Improving Dairy Reproductive Efficiency—Shawano
- 28 Raising Quality Dairy Heifers—Kimberly

March

- 1 Midwest Dairy and Beef Husbandry Conference—Madison
- 1 Private Pesticide Applicator Training—Shawano
- 7 Heart of the Farm Workshop for Farm Women—Kelly Lake
- 23 Transferring the Farm Seminar—Shawano

“University of Wisconsin-Extension U.S. Department of Agriculture and Wisconsin counties cooperating.
UW-Extension provides equal opportunities in employment and programming, including Title IX and ADA”.

ADDRESS SERVICE REQUESTED

Shawano County UW-Extension
Courthouse—Room 101
311 N Main Street
Shawano, WI 54166

NON-PROFIT
US POSTAGE PAID
PERMIT NO. 40
SHAWANO WI 54166