

Shawano County UWEX  
311 North Main Street  
Shawano, WI 54166  
(715) 526-6136

**Website:**

<http://shawano.uwex.edu>

**Like us on Facebook at:**

[uwex.shawano.ag](http://uwex.shawano.ag)

**Hours:**

**Monday - Friday**  
**8:00 am - 4:30 pm**

**Ag Agent:**

**Jamie Patton**  
[jamie.patton@ces.uwex.edu](mailto:jamie.patton@ces.uwex.edu)

**IN THIS ISSUE:**

Manure Safety Tips  
Shawano Forage Council Dry  
Down Dates  
West Nile Press Release  
Summer Beef Meeting  
North American Manure Expo  
Organic Field Day  
Marinette/Oconto Soil Health  
Field Day  
Corn Silage Field Day  
Agronomy/Soils Field Day  
Fall Beef Meeting  
Farm Management Update for  
Agricultural Professionals

*See you at the  
Shawano County Fair!*

An AA/EEO employer, University of Wisconsin-  
Extension provides equal opportunities in employ-  
ment and programming, including Title VI, Title IX  
and ADA requirements

# Shawano Ag Newsletter

University of Wisconsin Cooperative Extension

August/September 2017

**Greetings!**

Once again, summer has flown by and the Shawano County Fair is less than a month away! This has been a challenging summer for many, as severe weather has damaged crops, roads, and farmsteads across the county and commodity prices remain low. While out and about, it isn't hard to notice crop maturities are all across the board, suggesting harvest season will be a long one. We can only hope that Mother Nature will choose to cooperate with plentiful warm, dry days as we move into September and October.

As many of you may have read in the local newspaper, UW-Extension is undergoing reorganization due to ongoing budget cuts. The Shawano office is not exempt from these cuts and will see a reduced staff in 2018. At this point, we are unsure what the final staffing changes will bring to the Shawano office, but I will keep you apprised.

As you can see from the enclosed fliers, field day season is ramping up and there are several opportunities to take part in continuing education in beef, cover crops, agronomy, and organic agriculture. For up-to-date information, I encourage you to visit the Shawano County UW-Extension website (<http://shawano.uwex.edu>) or Facebook page ([uwex.shawano.ag](http://uwex.shawano.ag)). The Shawano County Forage Council will once again be hosting Corn Silage Dry Down Days September 6th through October 11th at United Co-op (1212 Bay Lake Road) in Shawano. Please bring samples in by 2:30 pm to ensure enough time for grinding and delivery to the lab drop-off.

I look forward to seeing you at upcoming educational events and of course, the Shawano County Fair – August 31<sup>st</sup> through September 4<sup>th</sup>! While at the fair, be sure to check out the newly remodeled Junior Fair Building and all the great projects exhibited by Shawano County youth!

Enjoy the rest of your summer!



Jamie

## Updating UW-Extension Ag Newsletter List

Thank you for your responses to this spring's newsletter list survey. We received several postcards with no names indicating the sender did not want to receive the newsletter. The cards were not coded, so without a name, I was unable to remove the sender from the mailing list.

If you wish NOT to receive the UW-Extension Ag Newsletter or if you would prefer an EMAIL rather than paper copy, please call our office at  
(715) 526-6136

# Non-Enclosed Manure Storage Safety Tips

With the upcoming field work, there will be a lot of activity around manure storage and manure handling facilities. Regardless of the types of operation, take time to inform and discuss these safety tips with your family and employees. If you hire custom nutrient applicators, use this as a means to share your safety requirements with the business owners and their employees.

Injuries and fatalities occur in confined space manure storages that are enclosed, such as beneath animal quarters; or below-ground collection and pump out pits; and in non-enclosed earthen, synthetic or concrete lined manure storages. Non-enclosed manure storages are open to the atmosphere but may meet the definition of a confined space in terms of occupational safety and health based on storage design and employee exposure to hazards.

## In the case of non –enclosed manure storage, hazards may include:

- A thick liquid and floating crust that make swimming, buoyancy, or even moving around very difficult.
- Steep and slippery slopes that can make getting out of manure storages difficult or impossible.
- An acceleration of hazardous gases (primarily methane, hydrogen sulfide, carbon dioxide, and ammonia) released from manure due to movement, agitation, removal, or addition of manure to storage.
- Localized layers of hazardous gases existing above manure surfaces, especially on hot humid days with little to no breeze.
- Not having sufficient oxygen to breathe if a person is ‘treading’ in manure because of inability to get out.
- A slow response time for adequate emergency action because of site isolation and remoteness.
- Potentially hazardous equipment in and around the manure storage.

## Safety guidelines to follow:

- Make sure everyone near manure storage structures understands the hazards that exist, including symptoms and effects that the various manure gases have on their health.
- Explosive gas may settle in pockets where agitation or pumping is occurring. No smoking, open flames or sparks should be allowed.
- Make sure the non-enclosed manure storage has a fence installed around the perimeter and access gates are locked to keep unauthorized personnel from entering the area.
- Post warning signs including manure drowning hazard signs and “Danger Manure Storage” or “Danger Keep Out,” or “Danger Keep Away,” on all sides of non-enclosed manure storage. If possible, these signs should be located by gates.
- Keep bystanders and non-essential workers away from non-enclosed manure storage. If retrieval is needed, this equipment will improve the possibility of a successful rescue.
- Never work alone. The second person’s role is to summon help in an emergency and assist with rescue without entering the manure storage.
- Move slowly around unenclosed manure storages as the ground can sometimes be uneven and may cause a person to trip or stumble.
- Understand equipment being used and have emergency shut-down procedures prepared.
- If equipment malfunctions or maintenance is required during agitating or pumping of the manure, shut all equipment off and remove it from the manure storage before servicing or repairing.
- If you feel unsure or uncomfortable with what you are getting ready to do near the manure storage; wait a moment and reconsider the action, contact a supervisor or farm manager, and review the situation before proceeding.
- Be prepared to call 911 in case of an emergency. Being prepared includes providing specific directions to the site of the emergency, accurately describing the incident, and number of victims.

Adapted from [Open Air Manure Storage Safety Tips](#) by Cheryl A Skjolaas, Interim Director/ Agricultural Safety Specialist, UW CTR for Agricultural Safety and Health; David Kammel, Extension Agriculture Building Design Specialist; Brian Holmes, Extension Farmstead Engineering Specialist; and Rebecca Larson, Extension Bio-Waste Specialist.



## Shawano-Menominee Counties Health Department

311 N. Main Street, Room 102

Shawano, WI 54166-2198

Phone: (715) 526-4808

Fax: (715) 524-5792

[www.co.shawano.wi.us](http://www.co.shawano.wi.us)

Judith Sengstock, BSN, RN

Director/Health Officer

July 31, 2017

Contact: Judith Sengstock, Health Officer  
715-526-4808

For Immediate Release

### **SHAWANO COUNTY CROW TESTS POSITIVE FOR WEST NILE VIRUS** **Protect Yourself Against Mosquito Bites**

The Shawano-Menominee Counties Health Department reports a dead crow found in Shawano County on July 26, 2017 has tested positive for West Nile virus. This is the first bird that tested positive for West Nile virus in Shawano-Menominee counties since surveillance for the mosquito-transmitted virus began May 1.

"The positive bird means that residents of Shawano and Menominee counties need to be more vigilant in their personal protective measures to prevent mosquito bites," Judith Sengstock, Health Officer/Director said.

West Nile virus is spread to humans through the bite of an infected mosquito. Mosquitoes acquire the virus by feeding on infected birds.

"Shawano and Menominee county residents should be aware of West Nile virus and take some simple steps to protect themselves against mosquito bites," Judith said. "The West Nile virus seems to be here to stay, so the best way to avoid the disease is to reduce exposure to and eliminate breeding grounds for mosquitoes."

The Shawano-Menominee Counties Health Department recommends the following:

- Limit time spent outside at dawn and dusk, when mosquitoes are most active.
- Apply insect repellent to clothing as well as exposed skin since mosquitoes may bite through clothing.
- Make sure window and door screens are in good repair to prevent mosquito entry.
- Properly dispose of items around your property that hold water, such as tin cans, plastic containers, ceramic pots, or discarded tires.
- Clean roof gutters and downspouts for proper drainage.
- Turn over wheelbarrows, wading pools, boats, and canoes when not in use.
- Change the water in bird baths and pet dishes at least every three days.
- Clean and chlorinate swimming pools, outdoor saunas, and hot tubs; drain water from pool covers.
- Trim tall grass, weeds, and vines since mosquitoes use these areas to rest during hot daylight hours.
- Landscape to prevent water from pooling in low-lying areas.

The majority of people (80%) who are infected with West Nile virus do not get sick. Those who do become ill usually experience mild symptoms such as fever, headache, muscle ache, rash, and fatigue. Less than 1% of people infected with the virus get seriously ill with symptoms that include high fever, muscle weakness, stiff neck, disorientation, mental confusion, tremors, confusion, paralysis, and coma. Older adults and those with compromised immune systems are at greater risk of developing central nervous system illness that can be fatal.

The Wisconsin Department of Health Services has monitored the spread of West Nile virus since 2001 among wild birds, horses, mosquitoes, and people. During 2002, the state documented its first human infections and 52 cases were reported that year. During 2016, 13 cases of West Nile virus infection were reported among Wisconsin residents. West Nile virus infections in humans have been reported from June through October; however, most reported becoming ill with West Nile virus in August and September.

The Wisconsin Division of Public Health will continue surveillance for West Nile virus until the end of the mosquito season. To report a sick or dead crow, blue jay, or raven, please call the Dead Bird Reporting Hotline at 1-800-433-1610.

For more information on West Nile virus:

<http://www.dhs.wisconsin.gov/communicable/ArboviralDiseases/WestNileVirus/Index.htm>

####





# SHAWANO COUNTY FORAGE COUNCIL

## 2017 CORN SILAGE DRYDOWN DATES

**Wednesdays - September 6<sup>th</sup> through October 11<sup>th</sup>**

**Drop off samples by 2:30 pm at:  
United Co-op, 1212 Bay Lakes Road Shawano, WI**

### **Questions??**

Jamie Patton, UW-Extension Ag Agent at:  
(715) 526-6136 or [jamie.patton@ces.uwex.edu](mailto:jamie.patton@ces.uwex.edu)

### **How to submit a corn silage dry down sample.**

1. From the center of the field, select a minimum of 5 representative stalks following a W-shaped sampling pattern through the field.
2. Cut the stalks 6 inches above the ground (or at chopper height).
3. Place the stalks in a plastic bag, ideally with wet papers, and bring them to the dry down site right away.
4. You need to submit \*Name, address, phone number or email \*Hybrid \*Day length \*Planting date

**Your sample will be ground and sent to the lab to be analyzed for moisture.  
Results will be sent to you by email, fax or telephone as soon as they are available.**

# NorthAmerican MANURE EXPO 2017

Innovation. Research. Solutions.



Registration is now open!

**AUGUST 22, 2017:** TOURS, AGITATION DEMO & INDUSTRY SEMINARS

**AUGUST 23, 2017:** SEMINARS & FIELD APPLICATION DEMOS

**TRADESHOW OPEN BOTH DAYS!**

**-TUESDAY: NOON - 8:00PM**

**-WEDNESDAY: 7:30AM - 6:00PM**

Hosted by:



In cooperation with:



COLLEGE OF  
AGRICULTURAL & LIFE SCIENCES  
University of Wisconsin-Madison



<http://www.manureexpo.org/>

## Additional 2017 Locations

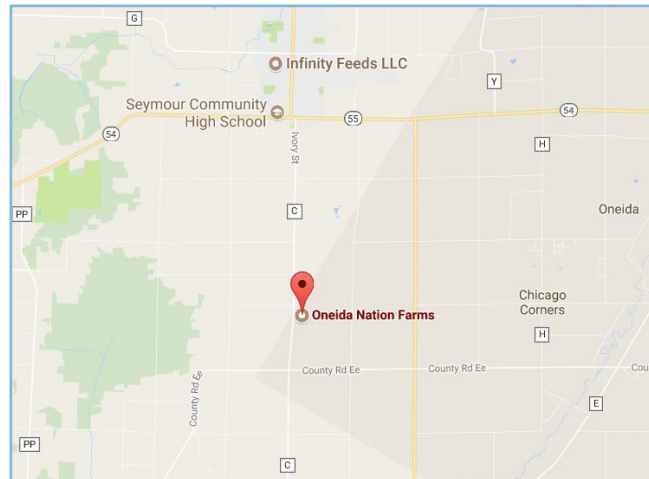
|           |                  |
|-----------|------------------|
| July 31   | Dane County      |
| August 1  | Dodge County     |
| August 2  | Iowa County      |
| August 8  | Barron County    |
| August 10 | Marquette County |
| August 14 | Jefferson County |
| August 16 | Outagamie County |
| August 17 | Taylor County    |
| August 23 | Douglas County   |

For more information on these locations, visit the Wisconsin Beef Information site:

[www.fyi.uwex.edu/wbic](http://www.fyi.uwex.edu/wbic)



Oneida Nation Farms  
N6010 County Rd C  
Seymour, WI 54165



Presented by the  
UW-Extension Beef and Livestock Teams

The Beef Cow/Calf Series provides educational information as a service to the public. Reference to a product, trademark or place of business does not constitute an endorsement by UWEX nor imply approval to the exclusion of similar products or business.

An EEO/AA employer, University of Wisconsin-Extension provides equal opportunities in employment and programming, including Title VI, Title IX, and ADA requirements. Please make requests for reasonable accommodations to ensure equal access to educational programs as early as possible preceding the scheduled program, service or activity.



Outagamie County

## 2017 Summer Beef Meeting



August 16, 2017 | 6:30 pm  
Oneida Nation Farms  
N6010 County Rd C  
Seymour, WI 54165





## A seminar series for

- Registered stock producers
- Commercial cow/calf producers
- Small hobby farm breed producers
- Ag professionals
- Educators



## About the Presentations

Eric Duch will be discussing vaccination protocols and products to help beef cow/calf producers decide how to safeguard their herd and improve production.

Lyssa Seefeldt will be talking about tools available to help farmers analyze how their farm is doing financially as well as budgeting resources.

## Schedule

6:30 pm Meal  
Hamburgers and fixin's

Farm Tour/Pasture Walk, Cow/Calf Herd,  
New Finishing Building

Facing the Finances: Managing in Tough  
Times

*Lyssa Seefeldt, Agriculture Agent  
UW-Extension Marquette County*

Vaccinations for Your Cow/Calf Herd

*Eric Duch, DVM,  
United Veterinary Service*



Registration Deadline: August 9

## Outagamie County Summer Beef Meeting Registration

Registration fee: \$10 per person

To attend the August 16, 2017 meeting in Outagamie County, return this form with payment by August 9 to:

Outagamie County UW-Extension  
3365 W Brewster St  
Appleton, WI 54914

Name(s) \_\_\_\_\_

Mailing Address \_\_\_\_\_

City \_\_\_\_\_ State \_\_\_\_\_ Zip \_\_\_\_\_

Phone \_\_\_\_\_ Email \_\_\_\_\_



*2017 Organic Field Day:*  
**Adding Organic to Large-Scale Farms**

**Thursday, August 24th, 2017 | 9 a.m. – 3 p.m.**

**Wallendal Farms- 2401 5<sup>th</sup> Avenue – Grand Marsh, Wis.**

***Learn about:***

- Organic transition
- Conservation tillage
- On-farm research trials
- Innovative crop rotations
- Successful record keeping
- Farm transfer to the next generation
- Dry bean breeding, production, and marketing
- Machinery and implements: what, when, and why
- Running a parallel (conventional/organic) operation



***Speakers:***

**John, Eric, and Megan Wallendal; Raechel Kosler, Wallendal Farms**

**Ken Kmiecik, independent bean breeder**

**Justin Morris, Regional soil health specialist, NRCS**

**Harriet Behar, Senior organic specialist, MOSES**

**Enjoy a free lunch with registration!**

**Register online at [mosesorganic.org/aug-24](http://mosesorganic.org/aug-24) or call 715-778-5775.**



**\*FEATURED AGENDA ITEM\* - COME SEE THE BRAND NEW STATE-OF-THE-ART  
NRCS RAINFALL SIMULATOR TRAILER IN ACTION!**

# Oconto-Marinette County Soil Health Series - Part II

**Tuesday, August 29, 2017 at 9:30am-12pm**

**Kuchta's Polzin Farm - W6041 County Rd M, Coleman, WI —Watch for signs**



## **Tentative Agenda:**

1. **Welcome/Soil Health Principles:** Jeff Maroszek - NRCS District Conservationist
2. **NRCS Rainfall Simulator Trailer-** New in Wisconsin! See how different cover types effect runoff and infiltration rates. This is a MUST SEE!.
3. **Soil Health "Friendly" Farm Equipment Demonstration:** Local implement dealer showcase
4. **Cover Crop Plot Walk-Thru:** Get up-close with different cover crop species and planting methods. Seed representatives will be on-hand to explain mixtures and benefits of cover crops.
5. **Soil Pit Demonstration—** See what's going on beneath the soil surface. Jamie Patton from UW-Extension will explore roots, soil features, and causes for potential compaction and drainage issues you may have on your

## **Registration Information:**

\$5/person (payable the day of event) to offset cost of lunch

**Please register by August 23rd to get head count for lunch** (Walk-ins still welcome)

Registration will be handled in conjunction with Corn Silage Afternoon Program

**\*\*Contact UW-Extension at (715) 732-7510 to Register\*\***

*Cooperatively Sponsored by:*



# Corn Silage Field Day

(In conjunction with the soil health field day in the a.m.)

Tuesday, August 29

Noon to 3:15 p.m.

Kuchta Farms, on Marinette Cty Hwy M, 2.5 miles west of Cty W, or 5.5 miles east of 141.



\$5 Registration Fee - includes lunch

Noon to 1 p.m. Registration, transition from soil health field day site, lunch

1 p.m. Dr. Joe Lauer, UW/UWEX Corn Agronomist

- Corn grain and silage yield responses to crop rotation
- New corn hybrid developments
- Season update, preparation for harvest

2:30 p.m. Chop length, processor settings, Inoculant considerations, packing

## Farmer to Farmer Website Links Forage Buyers to Sellers

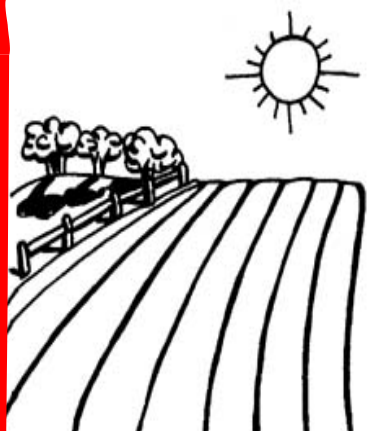
Dairy farmers in various parts of Wisconsin experienced severe alfalfa winterkill and injury this past winter. Losses were the greatest on heavy soil types with poorer drainage.

Because of these losses, there may be an interest in selling hay from counties with surplus forage inventories to areas of the state in need of forages. The Farmer to Farmer website <http://farmertofarmer.uwex.edu> can facilitate that process.

UW-Extension developed and supports the website that facilitates the local marketing of feed commodities where livestock producers in need of hay, haylage, straw, high moisture corn, corn silage or corn grain can easily make contact with sellers. All transactions and negotiations are handled directly between buyers and sellers.

The Farmer to Farmer Forage and Corn list is free of charge for both buyers and sellers. Users can search for, or list for sale, hay, haylage, straw, high moisture corn, corn silage or corn grain. Buyers can search for farmers in just one Wisconsin county or in any number of counties at once.

People who wish to use this service but do not have access to the Internet can get access and assistance at their local county UW-Extension office.



# AGRONOMY/SOILS FIELD DAY

## Cultivating a Resilient Agriculture

Tours & Exhibits of Current Crops & Soils Research

Wednesday, August 30, 2017

Arlington Agricultural Research Station

Registration @ 8 am

Tours depart from the Public Events Facility at  
8:30 am, 10:30 am, & 1:45 pm

Lunch provided by UW-Madison Badger Crops Club  
{suggested donation \$5/person}

### **Tour A: Building Soil Health {8:30 & 10:30 am}**

- Soils of Wisconsin (Alfred Haremink)
- Importance of perennialization & diversification (Gregg Sanford & Randy Jackson)
- Do cover crops improve soil health? (Matt Ruark)
- Trade-offs with soil management decisions (Francisco Arriaga)

### **Tour C: Perennial Forages to Accomplish Diverse Goals {10:30 am & 1:45 pm}**

- Alfalfa: What have we learned & where are we headed? (Dan Underlander)
- When & where do fungicides pay in forage crops (Damon Smith)
- Intermediate wheatgrass for forage & grain (Valentin Picasso)
- Silvopasture: Benefits & challenges of trees in grazing systems (Keefe Keeley, Diane Mayerfeld & Steve Ventura)

### **Tour B: Managing Short- & Long-term Risk in Cropping Systems {8:30 & 10:30 am}**

- How many corn hybrids should I grow on my farm? Minimizing risk & maximizing options (Joe Lauer)
- Harnessing G x E x M interactions in soybean (Shawn Conley)
- Weed management over 27 years in the Wis. Integrated Cropping Systems Trial (Nathan Drewitz & Dave Stoltenberg)
- Identification, distribution & herbicide resistance of waterhemp & Palmer amaranth (Sam Marquardt & Mark Renz)

### **\*Tour D: Designing Landscapes for Profit, Clean Water, Stable Climate & Biodiversity {10:30 am & 1:45 pm}**

- Yahara 2070: Using scenarios to understand impacts of future watershed land use (Chris Kucharik)
- SmartScape: Developing a decision support tool for farmscape management (Claudio Gratton)
- Biodiversity in the soil: Exploring how soil microbes influence crops (Thea Whitman)

**\*Tour D will be held in the Auditorium**

### **Lunch & Panel Discussion @ 12:00 to 1:45pm, in the Auditorium**

#### **"What Do We Mean by Resilient Agriculture?"**

*Randy Jackson* (Moderator; Professor, Dept. of Agronomy, UW-Madison) – Panelists include

*Andy Bensend* (A B Farms, Dallas, Wis.)

*Sarah Lloyd* (Special Products Coordinator, Wis. Farmers Union)

*Heidi Johnson* (Crops & Soils Educator, Dane Co. UW-Extension)

*Matt Ruark* (Professor & Extension Specialist, Dept. of Soil Science, UW-Madison)

The Arlington Research Station is located on Hwy. 51, about 5 miles south of Arlington & 15 miles north of Madison. Watch for Field Day signs.

For more information contact the Dept. of Agronomy 608/262-1390  
or the Dept. of Soil Science 608/262-0485.

In the event of rain, presentations will be held inside.

Sponsored by the UW-Madison College of Agricultural & Life Sciences/Arlington Agricultural Research Station/Departments of Agronomy & Soil Science, & UW Cooperative Extension

**{Certified Crop Advisors: CEU credits will be requested}**



For more information, contact  
UW-Extension Ag Agent  
Darrell McCauley  
920-232-1970  
darrell.mccauley@uwex.edu

**Sponsored by UW-  
Extension Offices in the  
following counties:**

Brown County  
Calumet County  
Door County  
Fond du Lac County  
Kewaunee County  
Manitowoc County  
Marinette County  
Oconto County  
Outagamie County  
Ozaukee County  
Shawano County  
Sheboygan County  
Washington County  
Waupaca County  
Waushara County  
Winnebago County



# Farm Management Update for Ag Professionals



**Friday, September 29, 2017**

**9:15 am - 3:00 pm**

**Liberty Hall, Kimberly**

800 Eisenhower Drive  
Kimberly, Wisconsin  
(920) 731-0164





# Farm Management Update for Ag Professionals

Friday, September 29, 2017

Liberty Hall, Kimberly

- 9:15 am **Registration, milk, coffee, juice, and rolls**
- 9:45 am **“Milk Marketing / Dairy Policy Outlook and Update”**  
- Mark Stephenson, *Extension Dairy Market Specialist, Center for Dairy Profitability UW-Madison*
- 10:30 am **“Understanding and Negotiating Milk Marketing Contracts”**  
- Troy Schneider, *Agricultural Attorney, Twohig, Rietbrock, Schneider and Halbach, S.C.*
- 11:15 am **“UW-Extension Update”**  
- *Local Extension Educators*
- 11:45 am **Lunch**
- 12:45 pm **“HR Best Practices”**  
- Simon Jette-Nantel, *Extension Farm Business Management Specialist, UW-River Falls,*  
Stephanie Plaster, *Ozaukee & Washington County Extension Agriculture Educator,*  
& Jennifer Blazek, *Dane County Extension Dairy and Livestock Educator*
- 1:30 pm **“Recruiting, Hiring & Managing Dairy Farm Employees”**  
- Frankie Rodriguez, *Co-Founder and Placement Specialist, AgriStaff USA, Kiel, WI*
- 2:10 pm **“AgFA Financial Dairy Analysis: Past, Present, Future”**  
- Jenny Vanderlin, *Extension Farm Business Management Specialist, Center for Dairy Profitability, UW-Madison*
- 2:30 pm **“Speaker Q & A / Open Forum”**  
- *Moderated by Scott Gunderson, Manitowoc County Extension Dairy and Livestock Educator*



An EEO/AA employer, University of Wisconsin-Extension provides equal opportunities in employment and programming, including Title VI, Title IX, and the Americans with Disabilities Act (ADA) requirements. Requests for reasonable accommodations for disabilities or limitations should be made prior to the date of the program or activity for which it is needed. Please do so as early as possible prior to the program or activity so that proper arrangements can be made. Requests are kept confidential.



## Farm Management Update for Ag Professionals Registration Form

Name(s): \_\_\_\_\_

\_\_\_\_\_

\_\_\_\_\_

E-Mail(s): \_\_\_\_\_

\_\_\_\_\_

\_\_\_\_\_

Business: \_\_\_\_\_

Address: \_\_\_\_\_

City: \_\_\_\_\_

Zip: \_\_\_\_\_

Phone: \_\_\_\_\_

Registration Fee: \$40 per person

Make check payable to: **Waupaca County**

Mail this registration form and check to:  
Waupaca County UW-Extension  
811 Harding Street  
Waupaca, WI 54981

715-258-6231

**Registration Deadline: September 22, 2017**



# FALL BEEF MEETING

Saturday, September 16, 2017

1 PM until 4 PM

**Cedar Barn Cattle Company**

Terry & Julie Yonker and Family

11413 North Flat Rock Lane, Gillett, WI 54124

**12:30 PM Registration**

**Farm Tour & Pasture Walk**

## **Presentations:**

### **Feeding Beef Cows and Finishing Feeder Cattle**

Daniel Schafer, Professor, UW-Madison, Department of Animal Science

### **Finding your Foothold on Digital Dermatitis**

Sarah Mills-Lloyd, DVM, Agriculture Agent, UW-Extension Oconto County

### **\$5 Registration Fee for printed materials**

RSVP REQUESTED BY SEPTEMBER 8, 2017 BY CALLING  
THE OCONTO COUNTY UW-EXTENSION OFFICE (920) 834-6845

#### *A SEMINAR SERIES FOR:*

- ◆ Registered stocker producers    ◆ Commercial cow/calf producers
- ◆ Small hobby farm beef producers    ◆ Agriculture professionals
- ◆ Educators    ◆ Youth livestock project participants

An EEO/Affirmative Action Employer, University of Wisconsin-Extension provides equal opportunities in employment and programming, including Title VI, Title IX and Americans with Disability Act (ADA) requirements.

## Calendar of Local Upcoming Events

| Date           | Workshop  | Location                         | Cost          | Registration Requirement |
|----------------|---|----------------------------------|---------------|--------------------------|
| August 17      | Summer Beef Meeting                                   | Oneida Farms<br>Seymour          | \$10          | Outagamie UWEX           |
| August 22 & 23 | North American Manure Expo                            | Arlington Research Station       | Tours<br>\$20 | See Website              |
| August 24      | Organic Field Day                                     | Wallendal Farms<br>Grand Marsh   | \$0           | See Website              |
| August 29      | Marinette/Oconto Soil Health Field Day                | Kuchta Farms<br>Coleman          | \$5           | Marinette UWEX           |
| August 29      | Corn Silage Field Day                                 | Kuchta Farms<br>Coleman          | \$5           | Marinette UWEX           |
| August 30      | Agronomy/Soils Field Day                              | Arlington Research Station       | \$0           | On Site                  |
| Aug 31—Sept 4  | Shawano County Fair                                   |                                  |               |                          |
| Sept 6—Oct 11  | Shawano County Dry Down Days                          | United Co-op<br>Shawano          |               |                          |
| September 16   | Fall Beef Meeting                                     | Cedar Barn Cattle Co.<br>Gillett | \$5           | Oconto UWEX              |
| September 29   | Farm Management Update for Agricultural Professionals | Liberty Hall<br>Kimberly         | \$40          | Waupaca UWEX             |

### Upper Midwest Hay Price Summary by Quality Grade

| Hay Grade                    | Bale type    | ----- Price (\$/ton) ----- |          |          |
|------------------------------|--------------|----------------------------|----------|----------|
|                              |              | Average                    | Minimum  | Maximum  |
| Prime (> 151 RFV/RFQ)        | Small Square | No Reported Sales          |          |          |
|                              | Large Square | \$186.00                   | \$130.00 | \$250.00 |
|                              | Large Round  | \$125.00                   | \$50.00  | \$200.00 |
| Grade 1 (125 to 150 RFV/RFQ) | Small Square | \$174.00                   | \$130.00 | \$180.00 |
|                              | Large Square | \$144.00                   | \$105.00 | \$240.00 |
|                              | Large Round  | \$90.00                    | \$70.00  | \$138.00 |
| Grade 2 (103 to 124 RFV/RFQ) | Small Square | \$98.00                    | \$80.00  | \$115.00 |
|                              | Large Square | \$103.00                   | \$60.00  | \$175.00 |
|                              | Large Round  | \$80.00                    | \$50.00  | \$100.00 |
| Grade 3 (87 to 102 RFV/RFQ)  | Small Square | No Reported Sales          |          |          |
|                              | Large Square | \$50.00                    | \$50.00  | \$50.00  |
|                              | Large Round  | \$55.00                    | \$13.00  | \$80.00  |



<http://fyi.uwex.edu/forage/h-m-r/>

Straw prices were steady this week as some straw was being sold off the field. Small square bale straw price averaged \$2.90 a bale (range of \$1.50 to \$5.00). Large square bale straw averaged \$37.00 per bale (range of \$17.00 to \$54.00). Large round bales averaged \$38.00 a bale this week (range of \$25.00-\$54.00) with limited round bale straw available at the market.